

BALL TRANSPORTATION **CART**



CONTENTS

1 General information	2	3 Installation and Operating Instructions.....	8
1.1 Foreword.....	2	3.1 Removing packing material and installation.....	8
1.2 One year warranty.....	2	3.2 Operating Instructions.....	8
1.3 EC Declaration of Conformity.....	3	4 Design and function.....	8
1.4 Description.....	4	4.1 General.....	8
1.4.1 Ball Transportation Cart	4	4.1.1 Main Components	9
1.4.2 Ball Management System.....	4	5 Maintenance	9
1.5 Identification.....	4	5.1 General.....	9
1.6 Technical data.....	5	5.2 Periodical maintenance.....	9
2 Safety Instructions	6	5.2.1 When the result is not satisfactory.....	9
2.1 General.....	6	5.3 Trouble shooting and Repair.....	10
2.2 Conformity with mandatory requirements	6	6 Spare parts	10
2.3 Remaining risks.....	6	7 Distributors and representatives.....	11
2.4 Authorised use	7	7.1 Head Office.....	11
2.5 Unauthorised use	7		
2.6 Emergencies.....	7		
2.6.1 Fire.....	7		
2.7 Operational reliability.....	7		

1 General information

1.1 Foreword

We would like to congratulate you on the purchase of your new Range Servant machine. Thank you for choosing Range Servant as a supplier. We are grateful to have you as a customer.

This instruction manual contains information you will need to maintain to operate the unit. Read through and understand the User's Manual before you take the machine in for service. If these instructions are not followed, the machine might get damaged or cause injury. In many cases, following the instructions is a necessary condition for Range Servant's warranty to be applicable. Each person operating the machine must read these instructions.

No part of this publication may be reproduced without the written authorization of Range Servant.

The machine has a one year warranty. Study the General Terms and Conditions for Delivery and keep it in a safe place. If you have any questions, or if problems should arise, please contact your Range Servant representative.

1.2 One year warranty

Range Servant AB hereby offers a warranty of one year (12 months) from the date of delivery to the ultimate customer.

All further information regarding defects or liability are outlined in Range Servant's General Terms and Conditions for Delivery.

1.3 EC Declaration of Conformity

In accordance with the Machine Directive 89/392/EEC, annex IIA.

The Manufacturer:

RANGE SERVANT®

Range Servant AB
Skallebackavägen 11
SE-302 41 HALMSTAD
Sweden

The Representative:

(To be filled in by a representative established within the EU)

.....
Company

.....
Address

.....
Telephone

Declare that:

Ball Transportation Cart
Machine

.....
Type

.....
Serial no., manufacturing no. etc.

- A. is in conformity with Council Directive 89/392/EEC of 14 June 1989 concerning approximation of the laws of the Member States relating to machines in particular as referred to in Annex I to this Directive concerning essential health and safety requirements in connection with the design and manufacture of machines, as amended by Council Directive 91/368/EEC of 20 June 1991 on the amendment of Directive 89/392/EEC concerning approximation of the laws of the Member States relating to machines;
- B. *(if applicable)* are manufactured in accordance with the following regulations, directives etc.:
- C. *(if the requirements under A have been fulfilled)* that the harmonized standards 292-1, 292-2 and 292-2A (or parts thereof) have been applied
- D. *(if applicable)* are manufactured according to the following national standards and technical specifications.

Halmstad on

.....
Date

Elvis Knez
President

.....
Signature

1.4 Description

1.4.1 Ball Transportation Cart

The Ball Transportation Cart, used with the cart hopper, makes filling balls a quick and easy part of Range Servant's Ball Management System.

Range Servant's user-friendly Ball Transportation Cart is designed to fill up the Tee Box in a easy and efficient way.

1.4.2 Ball Management System

Range Servant can deliver a complete, flexible Ball Management System adaptable to all driving range requirements. The whole chain will be complete, such as picking dirty range balls and delivering them to the washing units. From there, the balls are transported in the required amounts to ball receivers on single or multilevel driving ranges. Finally, the balls are fed out to the Ball Transportation Cart, which will end up ultimately at the Tee Box at each bay.

1.5 Identification

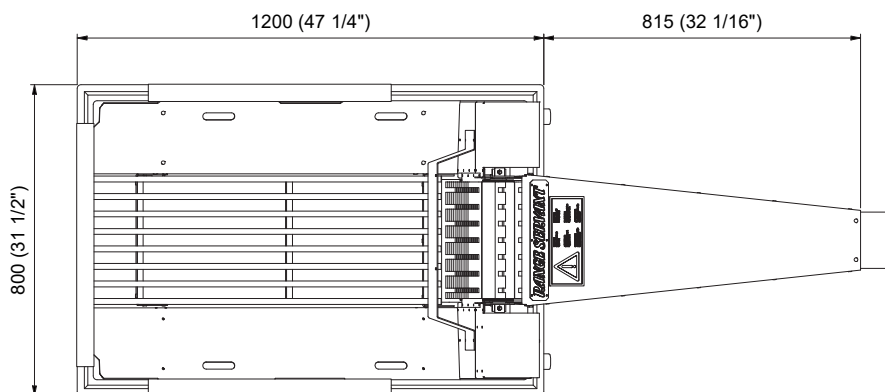
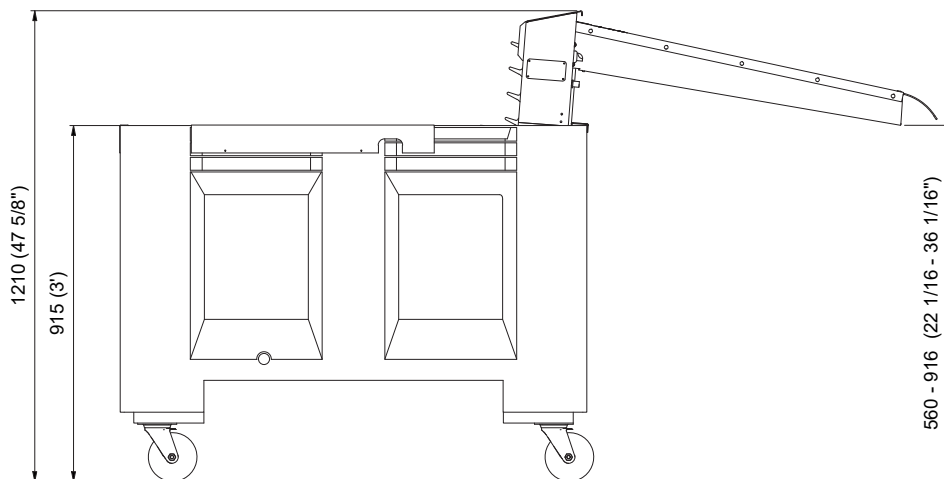
When contacting Range Servant, please identify your item with the help of the information contained in the identification plate. The identification plate is well visible and firmly attached and contains the following information:

- Name and address of the manufacturer
- CE-marking
- Designation of series or type of equipment
- Serial no., if any
- Year of manufacture

<i>RANGE SERVANT</i> [®]			
RANGE SERVANT AB, SE-302 41 HALMSTAD, SWEDEN			
TEL. +46 35 10 92 40 WWW.RANGESERVANT.COM			
MANUFACTURING NO.	<input type="text"/>		
YEAR	<input type="text"/>	MODEL	<input type="text"/>
WEIGHT	<input type="text"/>	VOLT/KW	<input type="text"/>
CE			

1.6 Technical data

BALL TRANSPORTATION CART	
GENERAL	
Hopper capacity [balls]	2000
DIMENSIONS	
Height (approx.) [mm] /([in])	915/1210 (36-47.7)
Length (approx.) [mm] /([in])	1200/2015 (47.3/79.3)
Width (approx.) [mm] /([in])	800 (31.5)
Approx. total weight, empty [kg]	103
ELECTRIC SYSTEM	
Mains supply [V, 50 Hz]	230
or [V, 60 Hz]	110
Motor (kW)	0.06
OPERATING CONDITIONS	
Operating Temperature [°C] /([°F])	+2 - +50 (+35 - +122)



The level of airborne noise has been measured for an identical unit under normal operating conditions.

The values indicate the sound pressure level measured 1 m [39.4°] from the sides of the unit and 1,6 m [63°] from the floor or access platform.

Sound pressure at the machine (dB, Peak)	N/A
Sound pressure at the machine (dB, A)	N/A

The manufacturer reserves the right to alter any details of the products without prior notice.

2 Safety Instructions

2.1 General

Safety measures are a combination of measures taken by the manufacturer when designing and building the unit and measures that have to be taken by the user.

The unit has been designed to function for its intended purpose. It has been designed and manufactured in such a way that configuration and maintenance can take place with the least possible risks to the operator, provided such work is carried out according to the instructions laid down in the User's Manual.

The objective of the safety measures is to eliminate all accident and hazards during the operational life of the unit. This also includes the assembly and dismantling of the unit, including any hazards arising as a consequence of such abnormal circumstances as can be anticipated.

Accessories and spare parts that have not been approved by Range Servant can lead to personal injuries and/or equipment damage and affect the operational reliability of the unit. For the sake of safety, you should therefore exclusively use accessories and original Range Servant spare parts. Such accessories and spare parts are specially intended for the unit and are approved by us with regard to safety.

All Range Servant retailers keep accessories and spare parts at your disposal along with competent advice. They also have the technical qualifications necessary for installing your unit and are informed about what technical changes are authorised.

Damage caused by the use of accessories and spare parts not having been approved by Range Servant and damage due to unauthorised technical modifications are not covered by the warranty obligation.

2.2 Conformity with mandatory requirements

The Range Servant ball management units fulfil the personal safety requirements of the EU Machine Directive 89/392/EEC as amended by Directives 91/368/EEC, 93/44/EEC and 93/68/EEC, with a special reference to Annex I of the Directive concerning essential health and safety requirements in connection with the design and manufacture of units, as amended by Directive 91/368/EEC. Furthermore the harmonised standards 292-1, 292-2 and 292-2A (or parts thereof) have been applied.

The electrical equipment fulfil the safety provisions laid down in the EU low voltage directive 73/23/EEC, as amended by directive 93/68/EEC.

2.3 Remaining risks

There are warning signs serving as a reminder and warning to the user of any remaining risks, i.e. risks that we have not been able to eliminate, or sufficiently minimise, in our design and against which technical safety measures do not provide complete, or sufficient, protection. The warning signs shall

be written in the local language and, on request, in the language understood by the respective operator. The signs are yellow with black characters. They are big enough to be readable from a distance of three meters.



Warning signs on front hatch

- Always disconnect the power supply to the unit before carrying out maintenance or service work so that it cannot start. The mains switch is located in the control box in the lower corner of the printed circuit board.
- Mechanical or electrical alterations may only be undertaken in consultation with Range Servant.
- If the unit is used at temperatures below 2°C, there is a risk of the water valve and water hoses freezing. To prevent this from happening, empty the unit of water when temperatures approach the freezing point.
- Never put your hands inside the Ball Transportation Cart when it is running.

2.4 Authorised use

The unit should only be brought into service if installed according to the instructions contained in this Manual.

2.5 Unauthorised use

Using accessories or spare parts not recommended by Range Servant might cause personal injury and/or equipment damage and affect the operational reliability of your ball dispenser. For safety reasons, use only those components recommended by us. They are intended for your machine, they have been chosen for safety reasons and they are approved by the manufacturer.

Damage caused by the use of accessories and spare parts not having been approved by Range Servant or damage due to unauthorised technical changes are not covered by the warranty obligation.

2.6 Emergencies

2.6.1 Fire

Water shall be used as an extinguisher in the event of fire, except if the fire is located in the electric equipment, where a carbon dioxide extinguisher must be used.

2.7 Operational reliability

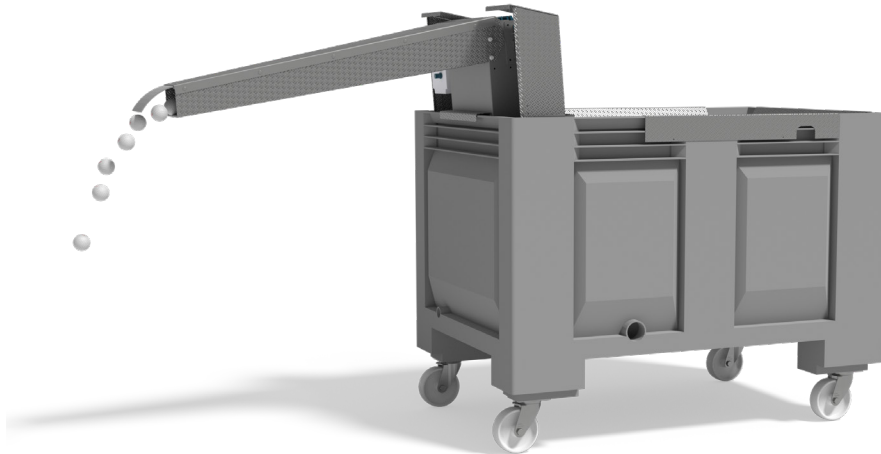
For trouble-free operation and long service life the instructions below should be followed:

- Place the unit on a firm well supported, preferably concrete, level surface.

3 Installation and Operating Instructions

3.1 Removing packing material and installation

1. Remove the packing.
2. Position the Ball Transportation Cart on a level surface.
3. Mount the filling chute by using the four (4) bolts and washers supplied by Range Servant.
4. The cart is now ready to use.



3.2 Operating Instructions

1. Connect to power supply.
2. Turn on/off the unit with the on/off switch.

4 Design and function

4.1 General

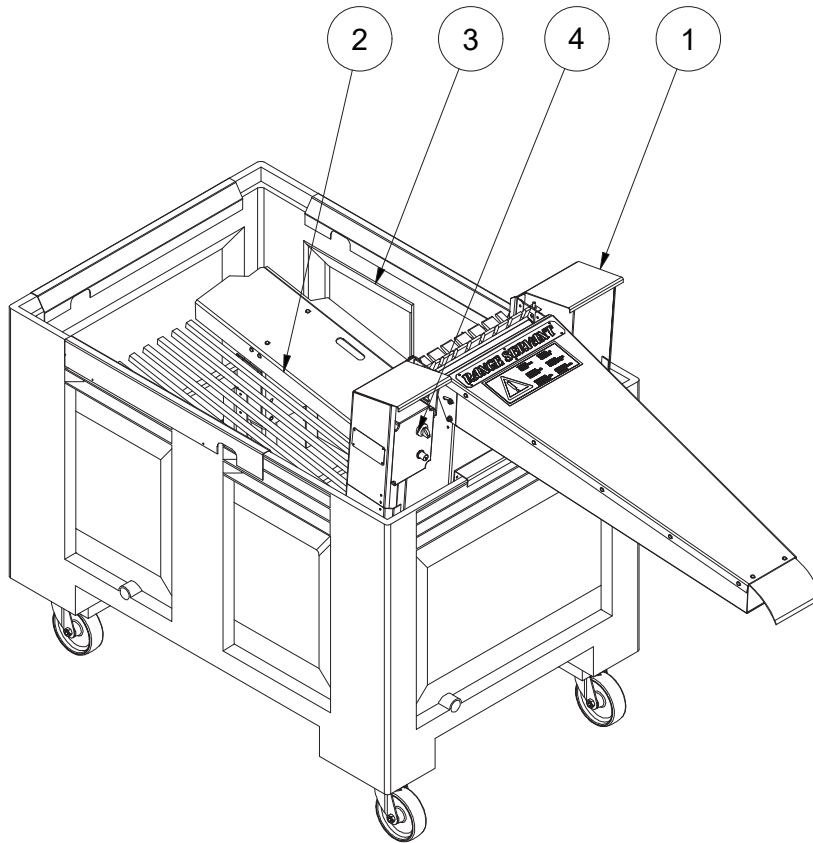
The unit has been designed for carrying range balls from hopper storage to Tee Boxes. The motor that runs the elevator is powered by 12 Volts for increased safety.

The elevator is equipped with an adjustable speed control. The knob that can be turned to either lower or increase the speed of the elevator belt.

The two metal side plates and bottom grid assembly can easily be taken out for cleaning of the bottom of the hopper.

Range Servant's Ball Transportation Cart has been designed to provide driving range owners with a long-lasting, reliable, practical and economical golf ball management system.

4.1.1 Main Components



POS.	DESCRIPTION
1	Elevator
2	Bottom Grid and side panels
3	Hopper
4	Control Box

5 Maintenance

5.1 General

Range Servant will provide accessories and original spare parts together with competent advice.

Maintenance carried out correctly minimizes defects and ensures maximum service life and reliable operation. Any malfunctions are detected at an early stage and are therefore easily corrected. Regular maintenance minimizes defects and equipment breakdown. The following maintenance instructions only refer to the most common problems and their causes.

5.2 Periodical maintenance

5.2.1 When the result is not satisfactory

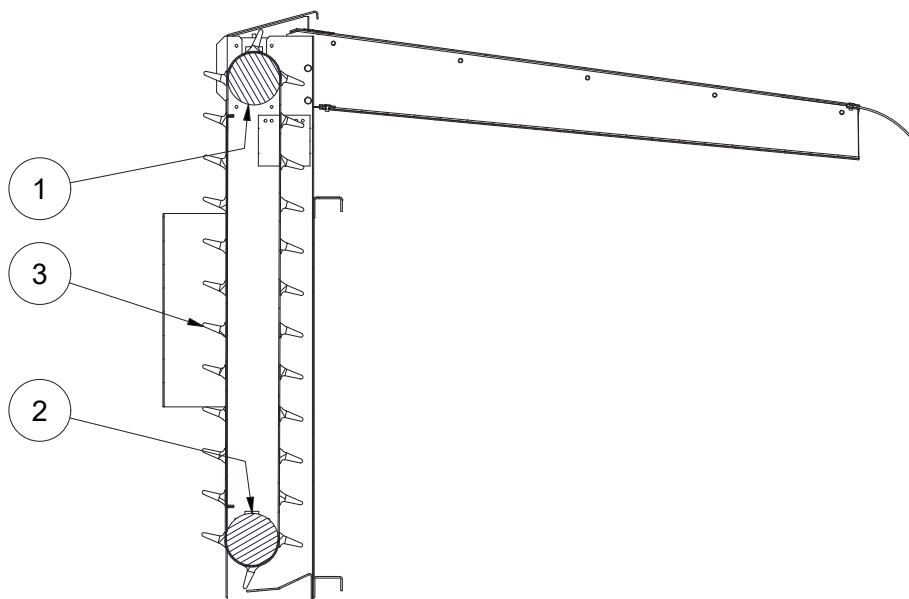
Please check that the belt is moving in a straight line and without complications.

5.3 Trouble shooting and Repair

The unit is very reliable, but problems may nevertheless arise for various reasons.

SYMPTOMS	POSSIBLE CAUSE	CORRECTIVE MEASURES
The Elevator does not start.	→ The unit is not connected to the power outlet.	→ Plug the unit to power outlet.
	→ Unit does not start.	→ Start by turning the start/stop button.
	→ Speed control has been affected.	→ Check that the elevator motor speed control is turned to maximum position, then adjust it to the right speed..
The unit stops / does not start	→ Something has gotten stuck in the unit.	→ Remove possible debris. Pull the elevator belt up and down to check that the belt is free from debris and foreign objects.

6 Spare parts



POS	PART NO.	DESCRIPTION	QTY
1	WIM0039	Elevator Motor 80S-DC	1
2	WIM0040	Elevator Idler 80S	1
3	WIA0023	Elevator belt with zip	1
	WIA0000	Swivel Caster and Wheel with stop-fix	2
	1000615	Control Cabinet Ball Transportation Cart	1

7 Distributors and representatives

The following list contains all the necessary information concerning the Range Servant representative closest to where you live. The list is continuously updated on our home page www.rangeservant.com

7.1 Head Office

Sweden

Range Servant AB

Skallebackavägen 11

SE-302 41 HALMSTAD

Telephone: +46 35 10 92 40

Fax: +46 35 10 82 20

E-mail: sales@rangeservant.com



Founded in Halmstad, Sweden in 1986, Range Servant's founder, Jordan Knez, saw a need to improve equipment for the golf industry. Using sustainability and durability as guiding principles, he combined his enthusiasm for golf and technical expertise to develop Sweden's first ball dispensers, washers, and ball pickers. In the early 90's, Range Servant expanded to the United States and developed a distributor network around the world. In 2023 we finally expanded into the UK with our own company. Range Servant handles nearly 10 billion balls annually and are considered the market leader in driving range equipment.

Range Servant produces and sells driving range equipment and solutions that manage the picking, washing, dispensing, and overall handling of golf balls. Each customer is unique, and we are always happy to assist with technical support, spare parts, installation, and project management. Range Servant offers a wide variety of accessories to round out a complete catalog of high-quality range equipment.

Our goal is to inspire the golfer to hit more balls and to help the range owner operate a carefree and more profitable business.

RANGE SERVANT®

RANGE SERVANT AB | Skallebackavägen 11 | SE-302 41 Halmstad | Sweden
Phone: +46 35 10 92 40 | support@rangeservant.com | www.rangeservant.com

