



ENGLISH

# *RANGE SERVANT*<sup>®</sup>

<http://www.rangeservant.com>

## **User's Manual SHOE CLEANER WITH COMPRESSED AIR**



# Contents

|                 |                                   |                  |
|-----------------|-----------------------------------|------------------|
| <b><u>1</u></b> | <b><u>General information</u></b> | <b><u>4</u></b>  |
| 1.1             | Foreword                          | 4                |
| 1.2             | Description                       | 5                |
| 1.2.1           | Shoe Cleaner                      | 5                |
| 1.2.2           | Ball Management System            | 5                |
| 1.3             | Identification                    | 5                |
| 1.4             | Technical Specification           | 6                |
| <b><u>2</u></b> | <b><u>Safety</u></b>              | <b><u>7</u></b>  |
| 2.1             | General                           | 7                |
| 2.2             | Remaining Hazards                 | 7                |
| 2.3             | Authorized Use                    | 7                |
| 2.4             | Unauthorized Use                  | 7                |
| 2.5             | Emergencies                       | 8                |
| 2.5.1           | Fire                              | 8                |
| 2.6             | Operational Reliability           | 8                |
| <b><u>3</u></b> | <b><u>Handling</u></b>            | <b><u>8</u></b>  |
| 3.1             | Conditions                        | 8                |
| 3.2             | Operating the Shoe Cleaner        | 8                |
| 3.2.1           | Start and Stop                    | 8                |
| <b><u>4</u></b> | <b><u>Design and Function</u></b> | <b><u>8</u></b>  |
| 4.1             | General                           | 8                |
| <b><u>5</u></b> | <b><u>Maintenance</u></b>         | <b><u>10</u></b> |
| 5.1             | Care                              | 10               |
| 5.2             | Periodical Maintenance            | 10               |
| 5.2.1           | As Necessary                      | 10               |
| 5.2.2           | Every Week                        | 10               |
| 5.2.3           | Every Month                       | 10               |
| 5.2.4           | Every Year                        | 10               |
| 5.3             | Troubleshooting and Repair        | 10               |
| 5.3.1           | General                           | 10               |
| 5.3.2           | Troubleshooting                   | 10               |
| <b><u>6</u></b> | <b><u>Installation</u></b>        | <b><u>11</u></b> |
| 6.1             | Unpacking and Assembly            | 11               |
| <b><u>7</u></b> | <b><u>Spare Parts</u></b>         | <b><u>11</u></b> |

|          |   |           |
|----------|---|-----------|
| 7.1      | Spare Part Numbers                          | 11        |
| <b>8</b> | <b><u>Retailers and representatives</u></b> | <b>12</b> |
| 8.1      | Head Office                                 | 12        |
| 8.2      | Your Sales Representative                   | 12        |

|              |                |
|--------------|----------------|
| Title:       | Br01shoe-E.doc |
| Prepared by: | Åsa Ahlinäs    |
| Date:        | 28/11/2006     |
| Word count:  | 1971           |
| Version:     | 3              |

# 1 General information

## 1.1 Foreword

Congratulations on your new Range Servant product. You have made a good choice! You have not just decided on an exceptional shoe cleaner featuring modern technology that requires little maintenance, but you have also chosen quality. The type of quality we guarantee through modern production technology, careful selection of materials and the dedicated work of all our employees.

This instruction book contains all the information you need to fully understand how to use and care for the equipment.

**Read through it and make sure you understand the Instructions for Use before trying to operate the machine.** Not following this advice could result in personal injury or damage to the machine. In many cases it is also a condition for being able to claim against the Range servant's guarantees. Everyone who will be using the machine must read the instructions thoroughly.

No part of this book may be reproduced without written permission from Range Servant.

The machine carries a one-year warranty. Read the warranty conditions carefully and keep them in a safe place. If you have any questions, or if any problems occur, contact your retailer.

### ONE-YEAR WARRANTY

Range Servant AB hereby warrants the materials and function of the RANGE SERVANT product specified in these Instructions for Use for a period of one year after delivery from the factory. This engagement applies to repaired or replaced components for a period of three months. This warranty only applies to the original purchaser. It also only covers parts which the manufacturer, after inspection, finds to be faulty. Repair or replacement of parts is to be carried out by an authorised representative of the manufacturer. The manufacturer further warrants that the equipment supplied conforms to the accompanying product description. **THE WARRANTIES SPECIFIED IN THIS AGREEMENT CONSTITUTE THE MANUFACTURER'S ONLY LIABILITY TO THE BUYER. THE MANUFACTURER DISCLAIMS LIABILITY FOR ANY COMMITMENTS BEYOND THE LIMITATIONS OF THE WARRANTY CERTIFICATE.** The manufacturer further disclaims all liability for any commitment that may be given by any unauthorised person in connection with the sale of the equipment. The warranty does not apply to equipment that has been repaired or had parts replaced by any person/company not specifically authorised to do so by the manufacturer. The manufacturer's warranty liability also does not apply in cases where the equipment is misused, is damaged by negligence/accident or is handled contrary to the accompanying Instructions for Use. Finally, the manufacturer is under no circumstances financially liable for damage that may arise in connection with the sale or repair of the equipment, or injury to a third party in connection with its use.

## 1.2 Description

### 1.2.1 Shoe Cleaner

The shoe cleaner can be used either separately or it can be integrated into a complete, automated system - the Range Servant Ball Management system.

### 1.2.2 Ball Management System

Range Servant deliver a complete, flexible Ball Management System adaptable to any kind of driving range requirements. The system includes a Ball Dispenser that can be combined with the work-efficient, environmentally friendly Ball Washer. The Ball Washer can be connected to the Elevator, the Conveyor Belt or the Blower securing the transport of clean, undamaged balls from Washer to Dispenser. The system also includes a Ball Picker collecting used balls from all over the driving range. With this, the circle is closed and manual work will have been reduced to a minimum.

By applying our extensive know-how to the specific problems of each driving range, we are able to offer the optimal, tailor-made solution.

## 1.3 Identification

When contacting Range Servant, please identify your machine with the help of information contained in the identification plate. The identification plate is well visible and firmly attached and contains the following information:

- Name and address of the manufacturer
- CE-marking
- Designation of series or type of machine
- Serial no., if any
- Year of manufacture

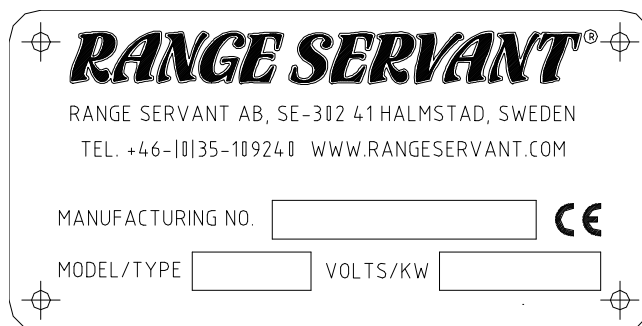


Fig. 1: Product Identification Plate

## 1.4 Technical Specification

| General   | Shoe Cleaner |
|---|--------------|
| Motor (kW)  | 0.3          |
| Voltage (Volt, 50 Hz)                             | 230          |
| (Volt, 60 Hz)                                     | 115          |
| Power Consumption (Amps)                          | 2.4          |
| Air Flow Rate (Lt/min)                            | 50           |
| Air Pressure (Bar)                                | 8            |
| Sound Level, non-enclosed compressor<br>(db(A)1m) | 43           |
| Weight (kg)                                       | 40           |
| Number of blow pistols                            | 2            |
| <b>Dimensions:</b>                                |              |
| Height (mm)                                       | 407 (628)    |
| Width (mm)  | 788          |
| Length (mm)                                       | 1033         |
| <b>Operating Conditions:</b>                      |              |
| Operating Temperature                             | +2 - +50°C   |

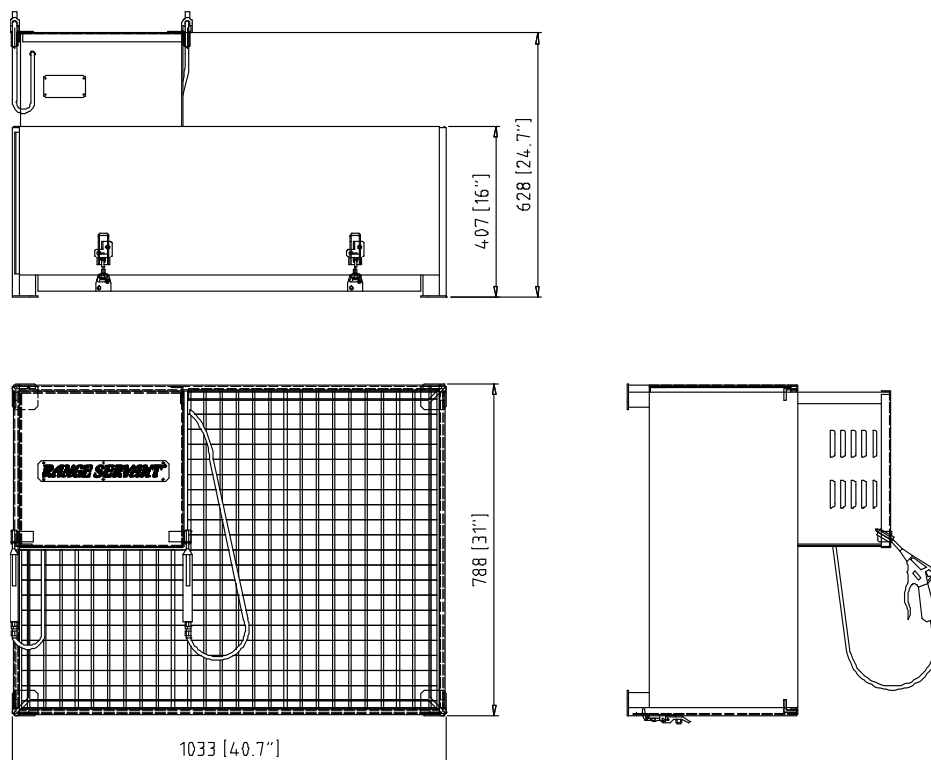


Fig. 2: Shoe Cleaner

The manufacturer reserves the right to make changes without prior notice.

## **2 Safety**

### **2.1 General**

Safety measures are a combination of measures taken by the manufacturer when designing and building the machine and measures to be taken by the user.

The machine has been designed to function for its intended purpose. It has been designed and manufactured in such a way that configuration and maintenance work can take place with the least possible risks to the operator, provided such work is carried out according to the instructions laid down in this Manual.

The objective of safety measures is to eliminate all risks of accident during the operational life of the machine which also includes assembly and dismantling, even if such risks arise as a consequence of abnormal circumstances that can be anticipated.

Accessories and spare parts not approved by Range Servant can lead to personal injuries and/or equipment damage and affect the operational reliability of the machine. For the sake of safety you should therefore only use accessories and original spare parts recommended by Range Servant. Such accessories and spare parts are specially intended for the machine and approved by us with regard to safety.

All Range Servant distributors keep accessories and spare parts at your disposal along with competent advice. They possess the technical qualifications necessary for installing your machine and know what technical changes would be authorized.

We cannot assume the responsibility for any damage caused by the use of accessories and spare parts that were not approved by Range Servant nor any damage due to unauthorised technical modifications.

### **2.2 Remaining Hazards**

- Before carrying out maintenance or service work on the machine, disconnect the power supply to the machine by pulling the plug from the wall socket.
- Mechanical or electrical alterations may only be undertaken in consultation with Range Servant.

### **2.3 Authorized Use**

The product is only to be used for cleaning shoes and equipment. It shall be operated in accordance with the instructions given in this Manual.

### **2.4 Unauthorized Use**

Using accessories or spare parts not recommended by Range Servant might cause personal injury and/or equipment damage and affect the operational reliability of your machine. For safety reasons, only use accessories and original parts recommended by Range Servant. Such accessories and parts are specifically intended for your Shoe Cleaner. They have been selected for safety reasons and are approved by the manufacturer.

We cannot assume the responsibility for any damage caused by the use of accessories and spare parts that were not approved by Range Servant nor any damage due to unauthorised technical modifications.

## **2.5 Emergencies**

### **2.5.1 Fire**

In the event of a fire in the Shoe Cleaner the fire shall be extinguished with water. If the fire is located in the electric equipment, a carbon dioxide extinguisher must be used.

## **2.6 Operational Reliability**

For trouble-free operation and long service life we recommend the following:

- Place the machine on a firm and level surface.
- Place the machine under shelter.

## **3 Handling**

### **3.1 Conditions**

On account of the technical characteristics and function of the machine, the person in charge of service and maintenance is required to have studied and understood this Manual.

### **3.2 Operating the Shoe Cleaner**

#### **3.2.1 Start and Stop**

On delivery the start handle of the shoe cleaner is in the start position. All the operator has to do is putting the plug into the wall socket and pressing the blow pistol.

## **4 Design and Function**

### **4.1 General**

The Shoe Cleaner is intended for the cleaning of shoes. It consists of two blow pistols run by a compressor. A pressure gauge with a device for regulation of the air pressure is placed next to the compressor. Shoes and other equipment are to be placed on the grid. With the help of the blow pistols, dirt and debris are blown off the shoes and collected in the box under the grid. The front plate is removable to facilitate cleansing the box.

Range Servants Shoe Cleaner has been designed to allow for time-saving, easy-to-handle, and inexpensive shoe cleaning on your driving range for many years to come.



#### 4.1.1 Main Components of Shoe Cleaner

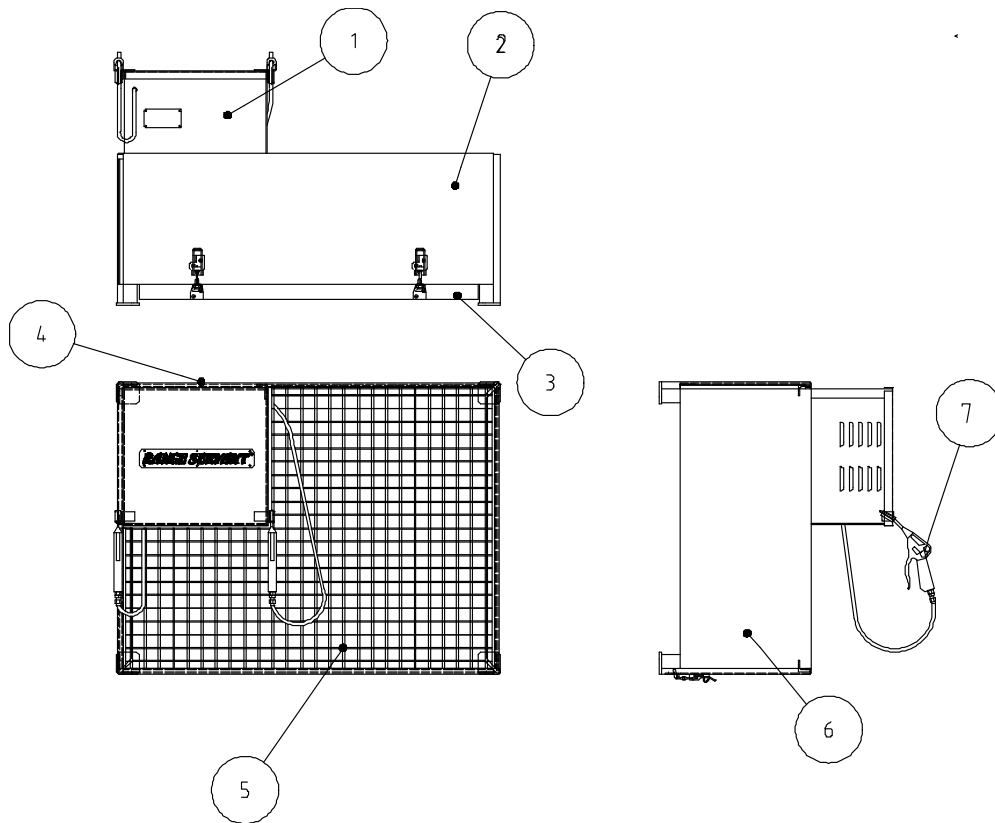


Fig. 3: Shoe Cleaner

| Pos. | Designation                |
|------|----------------------------|
| 1    | Compressor housing         |
| 2    | Front plate                |
| 3    | Bottom plate               |
| 4    | Rear plate                 |
| 5    | Grid                       |
| 6    | Side plate, right and left |
| 7    | Blow pistol                |

# 5 Maintenance

## 5.1 Care

Range Servant will provide accessories and original spare parts together with competent advice.

Proper care ensures maximum service life and reliable operation. Any malfunctions are detected at an early stage and are therefore easily corrected. Regular care minimises defects and unwanted equipment failure.

The following instructions refer to the most common problems and their causes.

## 5.2 Periodical Maintenance

### 5.2.1 As Necessary

- Open the front plate and empty the shoe cleaner of debris.
- Check inlet filter of compressor and replace as necessary.

### 5.2.2 Every Week

- Check oil level in compressor and add oil if necessary.

### 5.2.3 Every Month

- Empty the compressor air tank of condensate.
- Empty the compressor outlet filter of water.
- Wash the compressor with a soft rag to remove any dirt or dust that would render cooling difficult.

### 5.2.4 Every Year

- Change oil in compressor
- Check the safety valve

## 5.3 Troubleshooting and Repair

### 5.3.1 General

The Shoe Cleaner is very reliable but problems may arise for various reasons.

### 5.3.2 Troubleshooting

Problems can be located with the help of the following:

- The compressor does not run – check that the machine is plugged in.
- The compressor is running but no air is coming out – check that the compressor has not been blocked by debris.

# 6 Installation

## 6.1 Unpacking and Assembly

- I. Remove the packing.
- II. Place the Shoe Cleaner on a level surface.
- III. Connect the machine to a 230 V earthed power point.
- IV. The machine is ready for use.
- V. On delivery, air pressure is adjusted to medium pressure. The pressure can be regulated on the compressor according to the user's wish.

# 7 Spare Parts

## 7.1 Spare Part Numbers

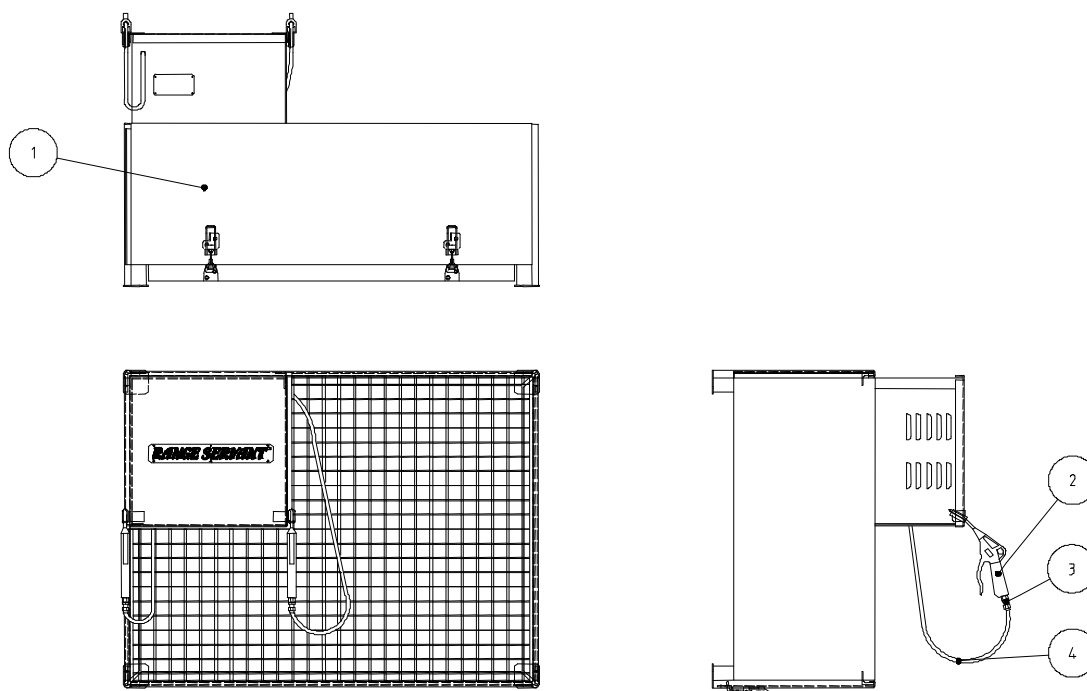


Fig. 4: Shoe Cleaner

| Pos. | Part No. | Designation      | Qty |
|------|----------|------------------|-----|
| 1    | ONA0000  | Compressor       | 1   |
| 2    | ONA0001  | Blow gun         | 2   |
| 3    |          | Adaptor (swivel) | 2   |
| 4    |          | Hose             | 2   |

## 8 Retailers and representatives

The following list contains all the necessary information concerning the Range Servant representative closest to where you live.

The list is continuously updated on our home page <http://www.rangeservant.com>

### 8.1 Head Office

#### Sweden

##### Range Servant AB

Skallebackavägen 11

302 41 HALMSTAD

Telephone: +46 35 10 92 40

Fax: +46 35 10 82 20

E-Mail: [sales@rangeservant.com](mailto:sales@rangeservant.com)

### 8.2 Your Sales Representative

